

fintech  OS

# Companies House Connector 1.0

## User Guide

# TOC

Overview .....	4
Business Pain Points .....	5
Key features .....	5
Installation .....	7
Prerequisites: .....	7
Import Packages: .....	7
System Parameters .....	8
Solution Walkthrough .....	9
Companies House Connector .....	10
Companies House - Search Officers .....	10
Companies House - Search Disqualified Officers .....	11
Search Company .....	11
1 Access Companies House Connector .....	12
2 Search for Company Data .....	13
3 Filter Company Data .....	15
4 Company Data Displayed .....	21
Search Officers .....	33
1 Access Companies House Officers .....	34
2 Search for Officers .....	35
3 Officers Data Displayed .....	36
Search Disqualified Officers .....	42
1 Access Companies House Officers .....	43
2 Search for Disqualified Officers .....	43
3 Officers Data Displayed .....	44

Natural Disqualification .....	46
Permissions to Act .....	46
<b>Configurations Walkthrough .....</b>	<b>48</b>
Server Automation Scripts .....	49

# Overview

Connectors are simple, data point connections to external SaaS providers, that are used to enrich internal customer data to help in onboarding and risk decision scenarios. API Connectors gather data from a collection of REST APIs with the purpose of merging them into a cloud-based data storage system. This process gives the possibility of filtering and transforming data into a proper format or structure for the purposes of querying and analysis.

FintechOS offers users the possibility to access different databases with the aim of moving data around by using API connectors. They can be used but are not limited to business banking or insurance scenarios, such as SME Onboarding, SME Lending, automatically fill-in company data, and so on.

Companies House is an UK government agency that incorporates and dissolves limited companies. The companies' information is examined, registered, and made available to the public to provide easy access to structured and accurate data.

The FintechOS Companies House Connector simplifies the incorporation process by allowing users to easily add it to their digital journey. Once integrated to the digital journey, the API connector calls a number of REST APIs in order to retrieve the following data:

- The company profile, that stores information such as company number and status, the registered office address, company type, and the date it was incorporated on. For more details, see the [Company Profile](#) section.
- The officers that work for the company and the penalties that they received. Disqualified officer data is also retrieved. For more details, see the [Officers](#) section.
- The insolvency status that shows whether the company has ceased trading, is insolvent, or dissolved. For more details, see the [Insolvency](#) section.
- The charges created by the company and registered in public records. For more details, see the [Charges](#) section.
- The filing history of a company, including directors' names and service addresses, and other business activity. For more details, see the [Filing History](#) section.

- The audit exemptions and the details regarding it. For more details, see the [Exemptions](#) section.
- A company's UK establishment. For more details, see [UK Establishments](#) section.
- Details regarding persons with significant control (PSC). For more details, see the [Persons with Significant Control](#) section.
- Details regarding the statements of the persons with significant control (PSC). For more details, see the [Persons with Significant Control Statements](#) section.

When accessed from a digital journey, the Companies House connector offers a fully digital seamless way for bank clerks to collect data from multiple systems. It can be further enhanced via FintechOS Studio adapting it to business requirements. The result is a fully functional and personalized searching tool that collects the needed information in a few steps.

## Business Pain Points

The Companies House connector is aimed at resolving some of the pain points when requiring quick access to public records:

- searching for company data is time consuming
- requires verified and structured information
- little time to analyze the data found

## Key features

Once integrated in a digital journey, the Companies House connector solves these pain points by offering a fully digital seamless way for users to collect data from multiple systems.

## COMPANIES HOUSE CONNECTOR USER GUIDE

- Easy to use. Bank clerks can easily add it to a digital journey and simply the process has only a few steps with instructions to easily navigate.
- Time-efficient. Data no longer needs to be added manually.
- The retrieved information is verified and structured into categories.

# Installation

Follow the bellow steps to install FintechOS Companies House Connector.

## Prerequisites:

1. Download the package from [FintechOS Marketplace](#).
2. Obtain the Companies House API key. Additional information can be found on the [Companies House Authorisation](#) page.
3. Install the package on an environment FintechOS 21.1.6.0 and above with the Innovation Studio, Portal and B2C Portal configured. For details on B2C, see [Setting B2C Environment](#).
4. Configure the **JobServer**. For information regarding FTOS JobServers, see the [JobServer](#) section from the Core DPA Platform 2 Administration Guide.

After the FintechOS environment is installed, please proceed with the next steps.

## Import Packages:

1. Open the FintechOS Innovation Studio, navigate to the **DevOps** menu, select the **Deployment Packages**. The Deployment **Packages List** page opens.
2. At the top-right corner of the page, click the **Import deployment package** icon. The Open pop-up appears.

### NOTE

For details on how to import, see [Importing a Deployment Package](#).

Browse for the deployment packages:

- a. Import **CompaniesHouse.xml**
  - b. Import **FTOS\_EXTD\_Connectors.xml**
  - c. Import **FTOS\_EXTD\_ConnectorsAPI.xml**
3. Repeat steps one and two and browse for the below deployment package:
- Import **FTOS\_EXTD\_Connectors\_Data\_Definition.xml**

## System Parameters

Set the below system parameters:

- CompanyHouseApiKey = base64 encoded value of the key obtained from Companies House. For encoding the site [base64 encode](#) can be used.
- CompanyHouseApiUrl = This is the base API URL for the Companies House integration.



# Solution Walkthrough

The FintechOS Companies House connector offers the possibility of accessing and retrieving company information from the UK government site Companies House. This site examines and stores company information delivered under the Companies Act and related legislation with the sole purpose of making this data available to the public.

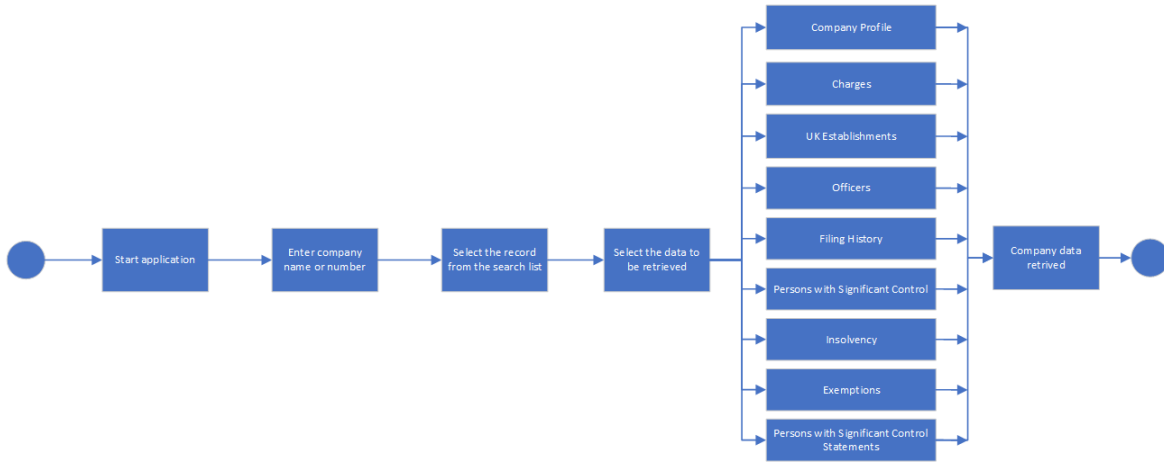
In order to have access to public company records, FintechOS proposes the following digital journeys.

- Companies House Connector
- Companies House - Search Officers
- Companies House - Search Disqualified Officers

## **IMPORTANT!**

The below UML walkthroughs are not representations of stand-alone applications. They represent propositions on how to use the Companies House connector once it is incorporated in a digital journey.

# Companies House Connector



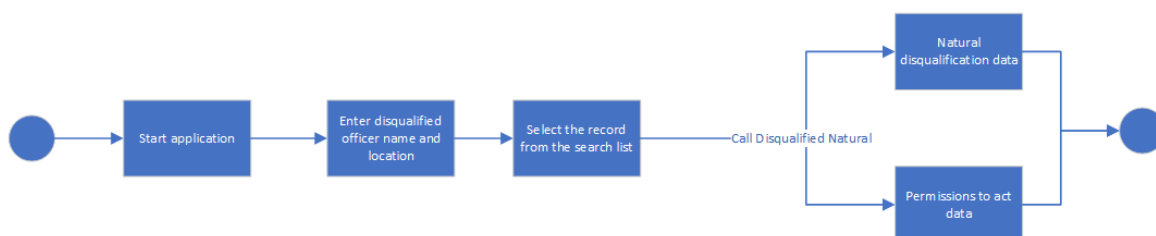
For a detailed walkthrough on how to search for company information, see the [Search company](#) page. To download the diagram in Visio, click [here](#).

# Companies House - Search Officers



For a detailed walkthrough on how to search for officer information, see the [Search Officers](#) page. To download the diagram in Visio, click [here](#).

# Companies House - Search Disqualified Officers



For a detailed walkthrough on how to search for disqualified officer information, see the [Search disqualified officers](#) page. To download the diagram in Visio, click [here](#).

## Search Company

The FintechOS Companies House Connector accesses Companies House public company records in order to retrieve the needed information. Once a company search is made through the **Search** option, the information is also displayed under the below categories. This offers bank clerks better data structure and easy access to specific information.

- Company Profile
- Officers
- Insolvency
- Charges
- Filing History
- Exemptions,
- UK Establishments

- Persons Control
- Persons Statement
- Response
- Officer Appointments

**IMPORTANT!**

The below walkthrough is a proposition on how to use the FintechOSCompanies House connector in a digital journey to search for company data.

## 1 Access Companies House Connector

1. Log into the FintechOS Portal using the given credentials.
2. From the main menu expand **My Projects** and click **Companies House - Search company**.
3. Select **Search**. The **Search List** page opens.
4. At the top-right corner of the scree, click the **Insert** button. The **Edit Companies House Search - Company Search** page opens.

EDIT COMPANIES HOUSE SEARCH - COMPANY SEARCH

Please enter your company

Next

## 2 Search for Company Data

5. In the search bar of the **Edit Companies House Search - Company Search** page, fill in the following field:

Field	Required	Type	Description
Company Name/Number	No	Text	Enter the name or the company registration number. The Company Registration Number (CRN) is unique to the limited company or LLP. It can be found on the certificate of incorporation and any official documentation received from Companies House. The CRN is also displayed on the public register of companies, which can be accessed online via Companies House Service.

### HINT

When entering a company name in the search bar, it returns any matches found in the database. For example, for the term "cheapside", the results displayed are not

only company names, but also addresses.

EDIT SEARCH - COMPANY SEARCH

Please enter your company

cheapside

Search...

Company Status ▼	Company Name ▼	Company Number ▼	Address ▼
active	SPRING4 HOLDINGS LI...	09363040	Cheapside House 2nd Floor, 138 Cheapside, London, United Kingdom, EC2V...

6. Click the **Next** button. A list with companies' data is generated.
7. From the generated list, select the wanted record.
8. Click the **Next** button. The **Edit Companies House Search - Checkbox** page opens.

Please enter your company

FintechOS

Search...

Company Status ▼	Company Name ▼	Company Number ▼	Address ▼
active	FINTECHOS HOLDING ...	FC038146	15 Hoogoorddreef, Amsterdam, 1101ba, Netherlands
open	FINTECHOS HOLDING ...	BR023238	Devonshire House 60 Goswell Road, London, EC1M 7AD
active	FINTECHOS TECHNOL...	11857916	Devonshire House, 60 Goswell Road, London, England, EC1M 7AD

### FINTECHOS HOLDING BV UK

Devonshire House 60 Goswell Road, London, EC1M 7AD

Next

## 3 Filter Company Data

In the **Edit Companies House Search - Checkbox** page, filter the information by selecting the desired categories from the checkboxes.

EDIT COMPANIES HOUSE SEARCH - CHECKBOX

## FINTECHOS HOLDING BV UK

Devonshire House 60 Goswell Road, London, EC1M 7AD

- |   |  |   |
|---|--|---|
| <input checked="" type="checkbox"/> Company Profile   | <input checked="" type="checkbox"/> Officers                         | <input checked="" type="checkbox"/> Insolvency                                  |
| <input checked="" type="checkbox"/> Charges           | <input checked="" type="checkbox"/> Filing History                   | <input checked="" type="checkbox"/> Exemptions                                  |
| <input checked="" type="checkbox"/> UK Establishments | <input checked="" type="checkbox"/> Persons with Significant Control | <input checked="" type="checkbox"/> Persons with Significant Control Statements |

Next



Field	Required	Type	Description
Company Profile	No	Bool	<p>The profile of the company. The following information is retrieved:</p> <ul style="list-style-type: none"> <li>• company number - the Company Registration Number (CRN) is unique to the limited company or LLP.</li> <li>• company status - provides information on the viability or current trading position of a company. Possible values:               <ol style="list-style-type: none"> <li>a. closed: the company is no longer active and it does not need to submit any further information to Companies House.</li> <li>b. active: the company has made significant accounting transactions during its most recent accounting period, normally the last 12 months.</li> <li>c. receivership: this means that a receiver has been appointed.</li> <li>d. voluntary arrangement: this means that the company is insolvent.</li> </ol> </li> </ul>

Field	Required	Type	Description
			<ul style="list-style-type: none"> <li>e. liquidation: depending on the circumstances, the liquidation process can be voluntary or compulsory.</li> <li>f. transferred from the UK: the company has transferred to a jurisdiction outside the UK.</li> <li>g. active - proposal to strike off: if the annual accounts are filed late, the company can be struck-off by Companies House and depending on the circumstances, it can cease to exist.</li> <li>h. dissolved: the company is in the process of being removed or struck off the Company Register.</li> <li>i. in administration: the company is unable to pay its debts and has been placed in administration by someone that manages its affairs on behalf of the creditors.</li> </ul>

Field	Required	Type	Description
			<ul style="list-style-type: none"> <li>• registered office address - the company's official address. It must be a physical location where notices, letters and reminders can be delivered to the company.</li> <li>• company type - the company type. Possible values:                             <ul style="list-style-type: none"> <li>a. Public companies limited by shares</li> <li>b. Public companies limited by guarantee</li> <li>c. Societates Europaeae</li> </ul> </li> </ul> <div data-bbox="1042 982 1370 1808" style="background-color: #e1eef6; padding: 10px; margin-top: 10px;"> <p><b>NOTE</b>                      After Brexit, Societates Europaeae are no longer formed in the UK. Societates Europaeae or SEs registered in the UK on the 1st</p> </div>

Field	Required	Type	Description
			<p>of January 2021, are automatically converted to UK Societates.</p> <ul style="list-style-type: none"> <li>d. Unlimited companies</li> <li>e. Private companies limited by shares</li> <li>f. Private companies limited by guarantee</li> <li>g. Community interest companies, on behalf of the Office of the Regulator of Community Interest Companies</li> <li>h. Companies incorporated by Royal Charter</li> <li>i. Some overseas companies with a physical presence in the UK</li> </ul> <ul style="list-style-type: none"> <li>• incorporated on - the process of registering a new or existing business as a limited company.</li> </ul>

Field	Required	Type	Description
Officers	No	Bool	The employees that work for the company and the penalties received.
Charges	No	Bool	The security that a company gives for a loan. For example, a mortgage.
Filing History	No	Bool	A comprehensive history and ordering facility for documents filed by a company.
Insolvency	No	Bool	Displays if the company is insolvent.
Exemptions	No	Bool	Displays if the company qualifies for an audit exemption.
UK Establishments	No	Bool	A place of business or branch of an overseas company within the UK.
Persons with Significant Control	No	Bool	Displays the persons that hold more than 25% of the shares or voting right of a company.
Persons with Significant Control Statements	No	Bool	Displays the statements of the persons that own or control the company.

9. Click the **Next** button. The **Edit Companies House Search - Results** page opens.

## 4 Company Data Displayed

10. In the **Edit Companies House Search - Results** page, the company data is displayed.

EDIT SEARCH - RESULTS

## FINTECHOS HOLDING BV UK

### Company number

BR023238

### Company status

open

### Registered office address

Devonshire House 60 Goswell Road, London, EC1M  
7AD

### Company type

uk-establishment

### Incorporated On

2021-02-01

COMPANY PROFILE

OFFICERS

INSOLVENCY

CHARGES

FILLING HISTORY

EXEMPTIONS

UK ESTABLISHMENTS

PERSONS WITH SIGNIFICANT CONTROL

PERSONS WITH SIGNIFICANT CONTROL STATEMENTS

Finish

11. Click the **Finish** button. The **Search List** page is displayed.

The sections displayed based on the selected filters are expandable. The following tables show the detailed information found in each section.

## Company Profile

This section displays standard business information.

Field	Type	Required	Description
Company name	Text	Yes	The name of the company.
Company number	Text	Yes	The company number.
Company status	Text	Yes	The company status.
Company type	Text	Yes	The company type.
Sic codes	Text	Yes	The companies SIC codes. SIC or standard industrial classification codes identify the trade area of the business. They are used to track the number of companies in different industries.

## Officers

Company officers are the officially named directors and, in some cases, the company secretary. They are authorised to represent the company and make decisions regarding how it is run.

Field	Type	Required	Description
Number	Text	Yes	The officer's ID number.

Field	Type	Required	Description
Nationality	Text	Yes	The officer's nationality.
Officer role	Text	Yes	The officer's role.
Address line 2	Text	Yes	The second line of the address.
Country of residence	Text	Yes	The officer's country of residence.

## Insolvency

This section shows whether the company has ceased trading, is insolvent, or dissolved. A company is considered insolvent when it is unable to pay its debts or when it has more liabilities than assets on its balance sheet. This can be legally referred to as “technical insolvency”. Liquidation is the legal ending of a limited company.

Field	Type	Required	Description
Number	Text	Yes	The insolvency case number.



Field	Type	Required	Description
Status	Text	Yes	<p>Company insolvency status details. Possible values are:</p> <ul style="list-style-type: none"> <li>• live proposed transfer from gb</li> <li>• voluntary arrangement</li> <li>• voluntary arrangement receivership</li> <li>• live receiver manager on at least one charge</li> <li>• receiver manager or administrative receiver</li> <li>• receiver manager</li> <li>• administrative receiver</li> <li>• administration order</li> <li>• receivership</li> <li>• in-administration</li> </ul>

Field	Type	Required	Description
Type	Text	Yes	<p>The insolvency case type. Possible values are:</p> <ul style="list-style-type: none"> <li>• compulsory liquidation</li> <li>• creditors voluntary liquidation</li> <li>• members voluntary liquidation</li> <li>• in administration</li> <li>• corporate voluntary arrangement</li> <li>• corporate voluntary arrangement moratorium</li> <li>• administration order</li> <li>• receiver manager</li> <li>• administrative receiver</li> <li>• receivership</li> <li>• foreign-insolvency</li> </ul>
Field	Type	Required	Description
Number	Text	Yes	The insolvency case number.

## Charges

In this section, the details of a charge created by the company and registered in public records is displayed. A charge is the security a company gives for a loan. For example, a mortgage is a type of charge.

Field	Type	Required	Description
Charge code	Text	Yes	The charge code is a replacement of the mortgage description
Charge number	Text	Yes	The charge number is used to reference an individual charge
Part satisfied count	Text	Yes	Number of satisfied charges.
Satisfied count	Text	Yes	Number of satisfied charges.
Total count	Text	Yes	Total number of charges returned by the API (filtering applies).

## Filing History

In this section, a comprehensive history and ordering facility for documents filed by a company is displayed.

Field	Type	Required	Description
Charge code	Text	Yes	The charge code is a replacement of the mortgage description
Charge number	Text	Yes	The charge number is used to reference an individual charge
Part satisfied count	Text	Yes	Number of satisfied charges.
Satisfied count	Text	Yes	Number of satisfied charges.
Total count	Text	Yes	Total number of charges returned by the API (filtering applies).

## Exemptions

This section displays if the company qualifies for an audit exemption and the details regarding it.

Field	Type	Required	Description
Disclosure transparency exemption from	Text	Yes	Specifies when the exemption is valid from.
Disclosure transparency exemption to	Text	Yes	Specifies when the exemption is valid to.

Field	Type	Required	Description
Disclosure transparency exemption type	Text	Yes	The exemption type. Possible values are: <ul style="list-style-type: none"> <li>• disclosure</li> <li>• transparency rules</li> <li>• chapter five applies</li> </ul>
Psc exempt as shares exemption from	Text	Yes	Specifies when the exemption is valid from.
Psc exempt as shares exemption to	Text	Yes	Specifies when the exemption is valid to.

## UK Establishment

An UK establishment is a place of business or branch of an overseas company in the United Kingdom. When registering a UK establishment of an overseas company, the UK is treated as a single jurisdiction.

Field	Type	Required	Description
Company name	Text	Yes	The name of the company.
Company number	Text	Yes	The company number.
Company status	Text	Yes	The status of the company.
Locality	Text	Yes	The company's locality.
Field	Type	Required	Description

## Persons with Significant Control

A PSC or person of significant control is someone that holds more than 25% of shares or voting rights in a company, has the right to appoint or remove the majority of the board of directors or otherwise exercises significant influence or control.

Field	Type	Required	Description
Kind	Text	Yes	The type of PSC. Possible values are: <ul style="list-style-type: none"> <li>• individual person with significant control</li> <li>• corporate-entity person with significant control</li> <li>• legal person with significant control</li> <li>• super secure-person with significant control</li> </ul>
Locality	Text	Yes	The PSC's locality.
Name elements forename	Text	Yes	The forename of the person with significant control.
Name elements surname	Text	Yes	The surname of the person with significant control.

Field	Type	Required	Description
Natures of controls	Text	Yes	Indicates the nature of control the person with significant control holds.
Name elements title	Text	Yes	Title of the person with significant control.
Address line 1	Text	Yes	The first line of the address.
Address line 2	Text	Yes	The second line of the address.
Business Unit	Text	Yes	Business unit of the person with significant control.
Legal authority	Text	Yes	The legal authority supervising the corporate entity or legal person with significant control.
Legal form	Text	Yes	The legal form of the corporate entity or legal person with significant control as defined by its country of registration.
Registration Number	Text	Yes	The registration number of the corporate entity with significant control.
Title	Text	Yes	Title of the person with significant control.

## Persons with Significant Control Statements

This section displays the statements of the persons with significant control.

Field	Type	Required	Description
Linked psc name	Text	Yes	The name of the psc linked to this statement.
Notified on	Text	Yes	The date that the person with significant control statement was processed by Companies House.
Restrictions notice withdrawal reasons	Text	Yes	<p>The reason for the company withdrawing a restrictions notice issued to the PSC statement. Possible values are:</p> <ul style="list-style-type: none"> <li>• restrictions notice withdrawn by court order</li> <li>• restrictions notice withdrawn by company</li> </ul>



Field	Type	Required	Description
Statement	Text	Yes	<p>The PSC's statement. Possible values are:</p> <ul style="list-style-type: none"> <li>• no individual or entity with significant control</li> <li>• steps to find psc not yet completed</li> <li>• psc exists but not identified</li> <li>• psc details not confirmed</li> <li>• psc contacted but no response</li> <li>• restrictions notice issued to psc</li> <li>• psc has failed to confirm changed details</li> </ul>

## Search Officers

Company officers are usually the officially named directors that are authorised to represent the company. They are also entitled to make decisions regarding how it is run. The FintechOS Companies House Connector accesses Companies House public officers records in order to retrieve the needed information. Once an officer search is made through the **Companies House Officers Search** option, the information is also displayed under the below categories. This offers bank clerks better data structure and easy access to specific information.

- Officers Details
- Officer Search
- Permissions To Act

**IMPORTANT!**

The below walkthrough is a proposition on how to use the FintechOS Companies House connector in a digital journey to search for disqualified officers.

## 1 Access Companies House Officers

1. Log into the FintechOS Portal using the given credentials.
2. From the main menu expand **My Projects** and click **Companies House - Search Officers**.
3. Select **Companies House Officers Search**. The **Companies House Officers Search List** page opens.

COMPANIES HOUSE OFFICERS SEARCH LIST

<input type="checkbox"/> Search Term	Search location	jsonData
Q	Q	Q
No data		

## 2 Search for Officers

4. At the top-right corner of the screen, click the **Insert** button. The **Add Companies House Officers Search - Search Officers** page opens. Fill in the following fields:

ADD COMPANIES HOUSE OFFICERS SEARCH - SEARCH OFFICERS

\* Sherlock Holmes

London

Next

Field	Required	Type	Description
Search Term	Yes	Text	Enter the name of the officer.
Search Location	No	Text	Enter the location of the officer.

6. Click the **Next** button. The **Edit Companies House Officers Search - Show Officers** page is displayed. In the **Officer Search** section, a list with officers' data is generated.

### 3 Officers Data Displayed

EDIT COMPANIES HOUSE OFFICERS SEARCH - SHOW OFFICERS

#### OFFICER SEARCH

<input type="checkbox"/>	Address...	Address...	Address...	Address...	Address...	Address...	Date Of...	Date of...	Descrip...	title	Links s...	
	Q	Q	Q	Q	Q	Q	Q	Q	Q	Q	Q	
	High St...	Stony ...	United ...	Milton ...	MK11 ...	58a	Buckin...			Total n...	CONN...	/officer...
	Castle ...		United ...	High W...	HP13 ...	29-31	Buckin...			Total n...	HEARN...	/officer...
<input checked="" type="checkbox"/>	New R...	Linslade	England	Leight...	LU7 2LX	8	Bedfor...			Total n...	HOLM...	/officer...
	Lowthe...		England	Carlisle	CA3 8...	26				Total n...	STAN ...	/officer...
	26 Elm...		England	Teddin...	TW11 ...	2 Beve...	Middle...			Total n...	HOLM...	/officer...
	High St...	Stony ...	United ...	Milton ...	MK11 ...	58a	Buckin...			Total n...	CONN...	/officer...
	4 Victo...		England	St. Alb...	AL1 3TF	Ground...				Total n...	G. HOL...	/officer...
	Manor ...		England	Wallas...	CH45 ...	Sherlo...	Wirral			Total n...	SHERL...	/officer...
	High St...	Stony ...	United ...	Milton ...	MK11 ...	58a	Buckin...			Total n...	CONN...	/officer...
	Morley		England	Leeds	LS27 9...	1 Victo...	West Y...			Total n...	CLAYT...	/officer...

5  20 1 2

Call Officer Details

#### OFFICER DETAILS

<input type="checkbox"/>	Address li...	Address li...	Address p...	Address p...	Address r...	Appointe...	Nationality	Occupation	Officer role	Resigned ...
	Q	Q	Q	Q	Q	Q	Q	Q	Q	Q
No data										

Previous

Finish

Field	Required	Type	Description
Address line 2	No	Text	The second line of the address.
Address country	No	Text	The officer's country.
Address locality	No	Text	The officer's location.
Address postal code	No	Text	The postal code.
Address premises	No	Text	The property name or number.
Address region	No	Text	The region where the address is located. For example, Surrey.
Date Of Birth Month	No	Date	The month of date of birth.
Date of birth year	No	Date	The year of date of birth.
Description	No	Text	A description of the officer.
Title	No	Text	The officer's job title.
Links self	No	Text	Links to other resources associated with this officer list item.

7. From the generated list, select the wanted record and click **Call Officer Details**. The **Officer Details** section is populated.

EDIT COMPANIES HOUSE OFFICERS SEARCH - SHOW OFFICERS

OFFICER SEARCH

<input type="checkbox"/>	Address...	Address...	Address...	Address...	Address...	Address...	Date Of...	Date of...	Descrip...	title	Links s...	
	<input type="text" value="High St..."/>	<input type="text" value="Stony ..."/>	<input type="text" value="United ..."/>	<input type="text" value="Milton ..."/>	<input type="text" value="MK11 ..."/>	<input type="text" value="58a"/>	<input type="text" value="Buckin..."/>			<input type="text" value="Total n..."/>	<input type="text" value="CONN..."/>	<input type="text" value="/officer..."/>
	<input type="text" value="Castle ..."/>		<input type="text" value="United ..."/>	<input type="text" value="High W..."/>	<input type="text" value="HP13 ..."/>	<input type="text" value="29-31"/>	<input type="text" value="Buckin..."/>			<input type="text" value="Total n..."/>	<input type="text" value="HEARN..."/>	<input type="text" value="/officer..."/>
<input checked="" type="checkbox"/>	<input type="text" value="New R..."/>	<input type="text" value="Linslade"/>	<input type="text" value="England"/>	<input type="text" value="Leight..."/>	<input type="text" value="LU7 2LX"/>	<input type="text" value="8"/>	<input type="text" value="Bedfor..."/>			<input type="text" value="Total n..."/>	<input type="text" value="HOLM..."/>	<input type="text" value="/officer..."/>
	<input type="text" value="Lowthe..."/>		<input type="text" value="England"/>	<input type="text" value="Carlisle"/>	<input type="text" value="CA3 8..."/>	<input type="text" value="26"/>				<input type="text" value="Total n..."/>	<input type="text" value="STAN ..."/>	<input type="text" value="/officer..."/>
	<input type="text" value="26 Elm..."/>		<input type="text" value="England"/>	<input type="text" value="Teddin..."/>	<input type="text" value="TW11 ..."/>	<input type="text" value="2 Beve..."/>	<input type="text" value="Middle..."/>			<input type="text" value="Total n..."/>	<input type="text" value="HOLM..."/>	<input type="text" value="/officer..."/>
	<input type="text" value="High St..."/>	<input type="text" value="Stony ..."/>	<input type="text" value="United ..."/>	<input type="text" value="Milton ..."/>	<input type="text" value="MK11 ..."/>	<input type="text" value="58a"/>	<input type="text" value="Buckin..."/>			<input type="text" value="Total n..."/>	<input type="text" value="CONN..."/>	<input type="text" value="/officer..."/>
	<input type="text" value="4 Victo..."/>		<input type="text" value="England"/>	<input type="text" value="St. Alb..."/>	<input type="text" value="AL1 3TF"/>	<input type="text" value="Ground..."/>				<input type="text" value="Total n..."/>	<input type="text" value="G. HOL..."/>	<input type="text" value="/officer..."/>
	<input type="text" value="Manor ..."/>		<input type="text" value="England"/>	<input type="text" value="Wallas..."/>	<input type="text" value="CH45 ..."/>	<input type="text" value="Sherlo..."/>	<input type="text" value="Wirral"/>			<input type="text" value="Total n..."/>	<input type="text" value="SHERL..."/>	<input type="text" value="/officer..."/>
	<input type="text" value="High St..."/>	<input type="text" value="Stony ..."/>	<input type="text" value="United ..."/>	<input type="text" value="Milton ..."/>	<input type="text" value="MK11 ..."/>	<input type="text" value="58a"/>	<input type="text" value="Buckin..."/>			<input type="text" value="Total n..."/>	<input type="text" value="CONN..."/>	<input type="text" value="/officer..."/>
	<input type="text" value="Morley"/>		<input type="text" value="England"/>	<input type="text" value="Leeds"/>	<input type="text" value="LS27 9..."/>	<input type="text" value="1 Victo..."/>	<input type="text" value="West Y..."/>			<input type="text" value="Total n..."/>	<input type="text" value="CLAYT..."/>	<input type="text" value="/officer..."/>

5  20  2

[Call Officer Details](#)

OFFICER DETAILS

<input type="checkbox"/>	Address li...	Address li...	Address p...	Address p...	Address r...	Appointe...	Nationality	Occupation	Officer role	Resigned ...
	<input type="text" value="New Road"/>	<input type="text" value="Linslade"/>	<input type="text" value="LU7 2LX"/>	<input type="text" value="8"/>	<input type="text" value="Bedfords..."/>	<input type="text" value="03/07/20..."/>	<input type="text" value=""/>	<input type="text" value=""/>	<input type="text" value="corporate..."/>	<input type="text" value=""/>

Field	Required	Type	Description
Address line 1	No	Text	The first line of the address.
Address line 2	No	Text	The second line of the address.
Address postal code	No	Text	The postal code.

Field	Required	Type	Description
Address premises	No	Text	The property name or number.
Address region	No	Text	The region where the address is located. For example, Surrey.
Appointed on	No	Date	The date on which the officer was appointed.
Nationality	No	Date	The officer's nationality.
Occupation	No	Text	The officer's job title.

Field	Required	Type	Description
Officer role	No	Text	<p>The officer's role. Possible values are:</p> <ul style="list-style-type: none"> <li>• cic-manager</li> <li>• corporate-director</li> <li>• corporate-llp-designated-member</li> <li>• corporate-llp-member</li> <li>• corporate-manager-of-an-eeig</li> <li>• corporate-member-of-a-management-organ</li> <li>• corporate-member-of-a-supervisory-organ</li> <li>• corporate-member-of-an-administrative-organ</li> <li>• corporate-nominee-director</li> <li>• corporate-nominee-secretary</li> <li>• corporate-secretary</li> <li>• director</li> </ul>



Field	Required	Type	Description
			<ul style="list-style-type: none"> <li>• general-partner-in-a-limited-partnership</li> <li>• judicial-factor</li> <li>• limited-partner-in-a-limited-partnership</li> <li>• llp-designated-member</li> <li>• llp-member</li> <li>• manager-of-an-eeig</li> <li>• member-of-a-management-organ</li> <li>• member-of-a-supervisory-organ</li> <li>• member-of-an-administrative-organ</li> <li>• nominee-director</li> <li>• nominee-secretary</li> <li>• person-authorized-to-accept</li> <li>• person-authorized-to-represent</li> <li>• person-authorized-to-represent-and-</li> </ul>

Field	Required	Type	Description
			accept <ul style="list-style-type: none"> <li>• receiver-and-manager</li> <li>• secretary</li> </ul>
Resigned on	No	Text	The date on which the officer resigned.

8. Click the Finish button. The **COMPANIES HOUSE OFFICERS SEARCH LIST** page opens.

#### HINT

Click the Previous button to return to the **Add Companies House Officers Search - Search Officers** page to edit or change the officer's name or location.

## Search Disqualified Officers

Disqualified officers are officers that are banned from being a company director if they don't meet their legal responsibilities. For example: allowing a company to continue trading when it can't pay its debts, not keeping proper company accounting records, not paying tax owned by the company, using company money or assets for personal benefit, and so on.

The FintechOS Companies House Connector accesses Companies House public disqualified officers records in order to retrieve the needed information. Once a disqualified officer search is made through the **Disqualified Officer Search** option, the information is also displayed under the below categories. This offers bank clerks better data structure and easy access to specific information.

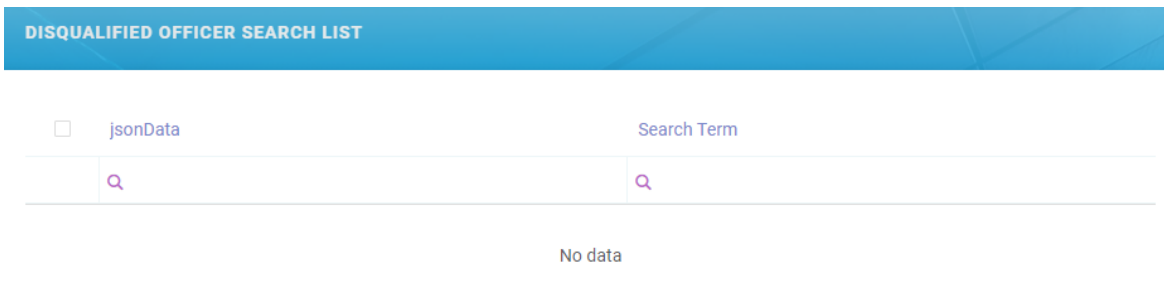
- Disqualified Officers List
- Permissions To Act
- Natural Disqualification

**IMPORTANT!**

The below walkthrough is a proposition on how to use the FintechOSCompanies House connector in a digital journey to search for disqualified officers.

## 1 Access Companies House Officers

1. Log into the FintechOS Portal using the given credentials.
2. From the main menu expand **My Projects** and click **Companies House - Search disqualified officers**.
3. Select **Disqualified Officer Search**. The **Disqualified Officer Search List** page opens.



## 2 Search for Disqualified Officers

4. At the top-right corner of the screen, click the **Insert** button. The **Add Disqualified Officers Search - Search Disqualified Officers** page opens. Fill in the following field:



Field	Required	Type	Description
Search Term	Yes	Text	Enter the name of the disqualified officer.

6. Click the **Next** button. The **Edit Disqualified Officers Search - Show Disqualified Officers** page is displayed.

### 3 Officers Data Displayed

In the **Disqualified Officers List** section, a list with officers' data is generated.

**EDIT DISQUALIFIED OFFICER SEARCH - SHOW DISQUALIFIED OFFICERS**

**DISQUALIFIED OFFICERS LIST**

<input type="checkbox"/>	Address li...	Address li...	Address c...	Address l...	Address p...	Address p...	Address r...	Date of bi...	Description	Links self
	St. Marys...		England	Doncaster	DN11 9LZ	11	South Yor...	1958-04-...	Born on 1...	/disqualifi...
	Sandring...			Hove	BN3 6XD	25	East Suss...	1973-05-...	Born on 5...	/disqualifi...
	Stratton ...	Cronton		Widnes	WA8 9FA	12		1971-09-...	Born on 9...	/disqualifi...
	Grand Rue			La Serpent	11190	8		1947-07-...	Born on 1...	/disqualifi...
	Francis S...			Lurgan	BT66 6DN	88	Armagh	1951-06-...	Born on 1...	/disqualifi...
<input checked="" type="checkbox"/>	Wickham...	Hurstpier...	United Ki...	Hassocks	BN6 9NP	45		1947-06-...	Born on 1...	/disqualifi...
	251 Linco...			Twickenh...	TW2 6NL		Middlesex	1963-05-...	Born on 8...	/disqualifi...
	The Ridg...			Croydon	CR0 4AD	13	Surrey	1983-08-...	Born on 2...	/disqualifi...
	Field Hou...	Market Pl...	United Ki...	Houghto...	DH5 8AJ		Durham	1982-08-...	Born on 2...	/disqualifi...
	Valley Mill	Park Road		Elland	HX5 9GY	Apartme...	West Yor...	1953-08-...	Born on 1...	/disqualifi...

5  20 1 2

Call Disqualified Natural

Field	Required	Type	Description
Address line 1	No	Text	The first line of the address.
Address line 2	No	Text	The second line of the address.
Address country	No	Text	The officer's country.
Address locality	No	Text	The officer's location.
Address postal code	No	Text	The postal code.
Address premises	No	Text	The property name or number.
Address region	No	Text	The region where the address is located. For example, Surrey.
Date Of Birth	No	Date	The disqualified officer's date of birth.
Description	No	Text	A description of the officer.
Links self	No	Text	Links to other resources associated with this officer list item.

7. From the generated list, select the wanted record and click the **Call Disqualified Natural** button. The **Natural Disqualification** and the **Permissions to Act** sections are populated if data is found.

## Natural Disqualification

This section displays information about natural (persons) disqualification. This refers to the officers that are disqualified or banned from the company as they did not meet their legal responsibilities.

Field	Required	Type	Description
Disqualification type	No	Text	An enumeration type that provides the disqualifying authority that handled the disqualification case.
Disqualified from	No	Text	The date that the disqualification starts.
Disqualified until	No	Text	The date that the disqualification ends.
Reason description identifier	No	Text	An enumeration type that provides the law under which the disqualification was made.

## Permissions to Act

This section displays information about the permissions provided by the court.

Field	Required	Type	Description
Court name	No	Text	The name of the court that handled the disqualification case.
Expires on	No	Text	The date that the permission ends.
Granted on	No	Text	The date that the permission starts.

8. Click the **Finish** button. The **COMPANIES HOUSE OFFICERS SEARCH LIST** page opens.

**HINT**

Click the **Previous** button to return to the **Edit Disqualified Officers Search - Show Disqualified Officers** page page to edit or change the officer's name or location.

# Configurations

## Walkthrough

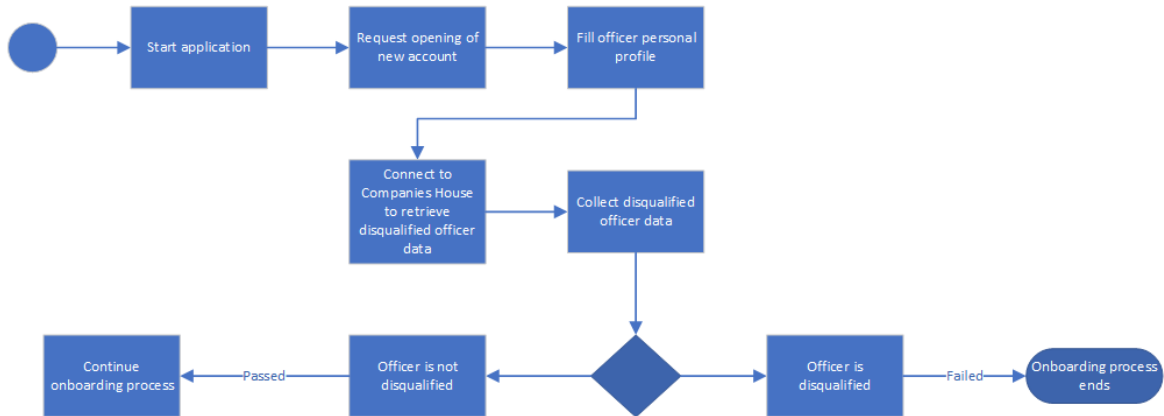
The following chapter of this guide is meant to explain how to use the Companies House connector in digital journeys, as well as the technical details of how the connector helps return data.

The Companies House Search connector enables a user to search for companies' public data. It is configurable to fit the business needs of any institution by use of such digital solution. An user can integrate the Companies House connector to their digital solution with the aim of onboarding certain companies or officers. This allows fast and easy access to public records without having to manually input them in their system. The information retrieved is up-to-date and structured.

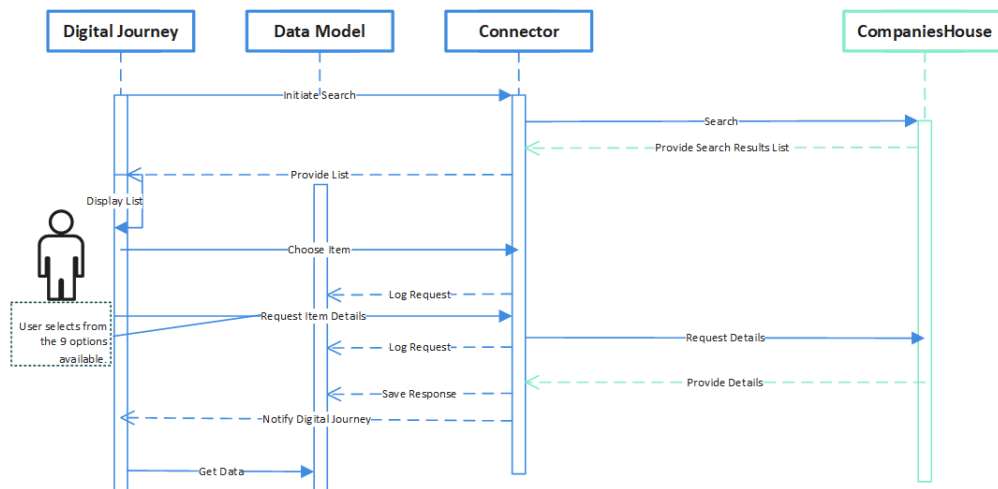
For example, in the following scenario, an account administrator from a bank has to start an onboarding process for a future employee. As a person that handles the creation of the account, he has to search for any misfit conduct such as not keeping proper company accounting records, not paying tax owned by the company, using company money or assets for personal benefit, and so on. To simplify the verification process, the account administrator only has to access the Companies House connector directly from their FintechOS digital journey and search for the needed information. The administrator inputs the person's name and the information is collected from the Companies House site's records. The data is then displayed in a structured manner and the account administrator can make a decision based on the search results. The UML diagram below describes the process of verifying if an officer is banned or not.



## COMPANIES HOUSE CONNECTOR USER GUIDE



The image below is a sequence UML diagram showing the main actions that the user takes when searching for particular records. To download the diagram in Visio, click [here](#).



## Server Automation Scripts

Within FintechOS Studio there are server scripts that execute several actions such as: filtering data, returning data, setting amounts or periods, and so on. On-demand automation scripts are available for being called from any object or context. The following tables list the server automation scripts and their definitions for this connector.

## FTOS\_EXTD\_CMPH\_CompanyProfile\_Endpoint

This script retrieves information about the company and it's profile.

Request:

```
{
  "ApiInfo": {
    "Token": "{{access_token}}"
  },
  "Request": {
    "ActionName": "FTOS_EXTD_CMPH_CompanyProfile_Endpoint",
    "Data": "{ \"callParam\" : {  companyNumber:
  \"11857916\" }  }"
  }
}
```

Response:

```
{
  "UIResult": {
    "NavigateToEntityPage": false,
    "NavigateToEntityPageOnEdit": false,
    "NavigateToEntityFormName": null,
    "NavigateToEntityName": null,
    "NavigateToEntityId": null,
    "NavigateToEntityInsertDefaults": null,
    "NavigateToUrl": null,
    "DownloadFile": null,
    "ReloadPage": false,
    "Message": "No data for: Insolvency",
    "IsSuccess": false,
    "Data": "[{\"Officers\":[]},{\"Company Profile\":
  []},{\"Filing History\":[]},{\"UKEstablishments\":[]},
  {\"Insolvency\":[]}]",
    "NavigateToPageNo": null
  },
  "Message": null,
  "IsSuccess": true,
  "ClientScript": null,
  "Serialized": null,
  "ErrorCode": 0
}
```

## FTOS\_EXTD\_CMPH\_Officers\_Endpoint

This script retrieves information about the company's employees.

Request:

```
{
  "ApiInfo": {
    "Token": "{{access_token}}"
  },
  "Request": {
    "ActionName": "FTOS_EXTD_CMPH_Endpoint",
    "Data": "{ \"query\" : {   companyNumber:
  \"06091467\" , officers:\"true\" }   }"
  }
}
```

Response:

```
{
  "UIResult": {
    "NavigateToEntityPage": false,
    "NavigateToEntityPageOnEdit": false,
    "NavigateToEntityFormName": null,
    "NavigateToEntityName": null,
    "NavigateToEntityId": null,
    "NavigateToEntityInsertDefaults": null,
    "NavigateToUrl": null,
    "DownloadFile": null,
    "ReloadPage": false,
    "Message": null,
    "IsSuccess": false,
  }
}
```

```

        "Data": "{ \"response\": { \"officers\": { \"items_per_
page\": 35, \"active_count\": 2, \"resigned_count\": 3, \"start_
index\": 0, \"inactive_count\": 0, \"links\":
{ \"self\": \"/company/06091467/officers\" }, \"total_
results\": 5, \"items\": [ { \"name\": \"BURGOYNE, Jonathan
Mark\", \"officer_
role\": \"director\", \"occupation\": \"Director\", \"country_
of_
residence\": \"England\", \"nationality\": \"British\", \"links\":
{ \"officer\": { \"appointments\": \"/officers/ZI-
gtVlGWHoOog8Lrz5v14qnHfM/appointments\
\" }, \"
self\": \
/company/
06091467/appointments/FZYsaNSHPWmmpItg8ajjFqg3XIY\" }, \"date_
of_birth\": { \"month\": 11, \"year\": 1975 }, \"address\":
{ \"postal_code\": \"BS21
6
HE\
\", \"
premises\": \
79
\
\", \"
country\": \"England\", \"locality\": \"Clevedon\", \"address_
line_1\": \"Kenn Road\", \"region\": \"North
Somerset\" }, \"appointed_on\": \"2012-03-31\" }, { \"address\":
{ \"premises\": \"28\", \"locality\": \"Bristol\", \"postal_
code\": \"BS40 8UP\", \"address_line_2\": \"Chew
Stoke\", \"address_line_1\": \"Dairy Way\" }, \"date_of_birth\":
{ \"year\": 1972, \"month\": 10 }, \"appointed_on\": \"2007-02-
08\", \"officer_role\": \"director\", \"name\": \"BURGOYNE,
Robert
James\
\", \"
occupation\": \"Director\", \"nationality\": \"British\", \"links\":
{ \"officer\":
{ \
appointments\": \
\": \
/officers/
f0VcmDx21gExQQ3rK4uxvs9F4A/appointments\
self\": \"/company/06091467/appointments/ojX7nAGt13eWvVPV569_

```

address\": { \"postal\_code\": \"BS21

TABLE OF CONTENTS, \"locality\": \"Clevedon\" }, \"appointed\_on\": \"2007-

\", \"officer\_role\": \"secretary\", \"links\":

\", \"officer\":

```

Director\", \"resigned_on\": \"2018-07-01\", \"date_of_birth\":
{ \"year\": 1944, \"month\": 10}, \"address\":
{ \"region\": \"Avon\", \"postal_code\": \"BS21
7RR\", \"locality\": \"Clevedon\", \"address_line_1\": \"34
Albert Road\"}, \"appointed_on\": \"2007-02-08\"},
{ \"address\": { \"address_line_2\": \"Kingswood\", \"postal_
code\": \"SS16 5EL\", \"country\": \"United
Kingdom\"
\", \"
premises\"
\": \"
150
\", \"region\": \"Essex\", \"locality\": \"Basildon\", \"address_
line_1\": \"Waldegrave\"}, \"date_of_birth\":
{ \"month\": 7, \"year\": 1967}, \"appointed_on\": \"2012-03-
31\", \"resigned_on\": \"2019-03-01\", \"country_of_
residence\": \"United
Kingdom\", \"nationality\": \"British\", \"links\":
{ \"officer\":
{ \"
appointments\"
\": \"
/officers/bKr1qiLGZKTv6DkI5TFKWlkdM8/appointments\"
\"}, \"self\": \"/company/06091467/appointments/HAbBV80NX9KWED_
ZEpmc40kvRpA\"}, \"officer_
role\": \"director\", \"name\": \"JONES, Darren
Scott\"
\", \"
occupation\"
\": \"
Director\"
\"}], \"
etag\"
\": \"
f038b432d6e0f63688118967896cff892a58cc5d\"
\", \"kind\": \"officer-list\"}}}},
      \"NavigateToPageNo\": null
    },
    \"Message\": null,
    \"IsSuccess\": true,
    \"ClientScript\": null,
    \"Serialized\": null,
    \"ErrorCode\": 0
  }
}

```

## FTOS\_EXTD\_CMPH\_Charges\_Endpoint

This script retrieves information about the charges registered by a company.

Request:

```
{
  "ApiInfo": {
    "Token": "{{access_token}}"
  },
  "Request": {
    "ActionName": "FTOS_EXTD_CMPH_Endpoint",
    "Data": "{ \"query\" : { companyNumber:
  \"06091467\" , charges:\"true\" }  }"
  }
}
```

Response:

```
{
  "UIResult": {
    "NavigateToEntityPage": false,
    "NavigateToEntityPageOnEdit": false,
    "NavigateToEntityFormName": null,
    "NavigateToEntityName": null,
    "NavigateToEntityId": null,
    "NavigateToEntityInsertDefaults": null,
    "NavigateToUrl": null,
    "DownloadFile": null,
    "ReloadPage": false,
    "Message": null,
    "IsSuccess": false,
    "Data": "{ \"response\" : { \"charges\" : {} } }",
    "NavigateToPageNo": null
  },
  "Message": null,
  "IsSuccess": true,
  "ClientScript": null,
  "Serialized": null,
  "ErrorCode": 0
}
```

## FTOS\_EXTD\_CMPH\_FilingHistory\_Endpoint

This script retrieves information about the company's filing history.

## Request:

```
{
  "ApiInfo": {
    "Token": "{{access_token}}"
  },
  "Request": {
    "ActionName": "FTOS_EXTD_CMPH_Endpoint",
    "Data": "{ \"query\" : { companyNumber:
  \"06091467\", fillingHistory:\"true\" } }"
  }
}
```

## Response:

```
{
  "UIResult": {
    "NavigateToEntityPage": false,
    "NavigateToEntityPageOnEdit": false,
    "NavigateToEntityFormName": null,
    "NavigateToEntityName": null,
    "NavigateToEntityId": null,
    "NavigateToEntityInsertDefaults": null,
    "NavigateToUrl": null,
    "DownloadFile": null,
    "ReloadPage": false,
    "Message": null,
    "IsSuccess": false,
  }
}
```

```

        "Data": "{ \"response\": { \"filingHistory\": { \"filing_
        history_status\": \"filing-history-available\", \"items_per_
        page\": 25, \"total_count\": 47, \"start_index\": 0, \"items\":
        [ { \"action_date\": \"2021-02-
        08\", \"category\": \"confirmation-
        statement\", \"date\": \"2021-07-
        26\", \"description\": \"confirmation-statement-with-
        updates\", \"description_values\": { \"made_up_date\": \"2021-
        02-08\" }, \"links\": { \"self\": \"/company/06091467/filing-
        history/MzMwODc3MTQyMWFkaXF6a2N4\", \"document_
        metadata\": \"https://frontend-doc-api.company-
        information.service.gov.uk/document/Sv91fA99aEmDDMTP2wxNLhMK
        270iy1JgnPgri0eATeU\", \"type\": \"CS01\", \"pages\": 5, \"barco
        de\": \"XA9IQIOB\", \"transaction_
        id\": \"MzMwODc3MTQyMWFkaXF6a2N4\", { \"action_date\": \"2020-
        03-31\", \"category\": \"accounts\", \"date\": \"2021-02-
        03\", \"description\": \"accounts-with-accounts-type-micro-
        entity\", \"description_values\": { \"made_up_date\": \"2020-03-
        31\" }, \"links\": { \"self\": \"/company/06091467/filing-
        history/MzI5MDI4MTk1N2FkaXF6a2N4\", \"document_
        metadata\": \"https://frontend-doc-api.company-
        information.service.gov.uk/document/ygKvdYFiNGZKTnWHv3LO5Wkt
        9fEwZwJVtKZ5j6QLCio\", \"type\": \"AA\", \"pages\": 6, \"barcode
        \": \"X9XHLT88\", \"transaction_
        id\": \"MzI5MDI4MTk1N2FkaXF6a2N4\",
        { \"category\": \"resolution\", \"date\": \"2020-09-
        24\", \"description\": \"resolution\", \"description_values\":
        { \"description\": \"Resolutions\" }, \"links\":
        { \"self\": \"/company/06091467/filing-
        history/MzI3ODY0Mzc3M2FkaXF6a2N4\", \"document_
    
```



```

metadata\":"https://frontend-doc-api.company-
information.service.gov.uk/document/8ubuwaAULIdZT8pf2amQEytW
46gWQ0G-Bsq9CuF-r_
I\"},"subcategory\":"certificate",\type\":"RESOLUTIONS\
","\associated_filings\":[{\category\":"change-of-
name\","\date\":"2020-09-24\","\description\":"change-of-
name-by-resolution\","\type\":"NM01\"}],\resolutions\":"
[{\category\":"change-of-
name\","\description\":"resolution-change-of-
name\","\description_values\":{"resolution_date\":"2020-
09-
21\"}],\subcategory\":"resolution\","\type\":"RES15\"}],\
pages\":3,\barcode\":"X9E69L00\","\transaction_
id\":"MzI30DY0Mzc3M2FkaXF6a2N4\"},{\action_date\":"2020-
02-08\","\category\":"confirmation-
statement\","\date\":"2020-03-
11\","\description\":"confirmation-statement-with-
updates\","\description_values\":{"made_up_date\":"2020-
02-08\"}},\links\":{"self\":"\/company/06091467/filing-
history/MzI10TU4NTQ3MmFkaXF6a2N4\","\document_
metadata\":"https://frontend-doc-api.company-
information.service.gov.uk/document/2L_
Y97ArhXCj5kxmkITzi80NELz3THt29fFvcg8Ehys\"}],\type\":"CS01\
","\pages\":5,\barcode\":"X90KOZI9\","\transaction_
id\":"MzI10TU4NTQ3MmFkaXF6a2N4\"},{\action_date\":"2019-
03-31\","\category\":"accounts\","\date\":"2019-12-
18\","\description\":"accounts-with-accounts-type-micro-
entity\","\description_values\":{"made_up_date\":"2019-03-
31\"}},\links\":{"self\":"\/company/06091467/filing-
history/MzI1MjQ3MjM5NmFkaXF6a2N4\","\document_
metadata\":"https://frontend-doc-api.company-
information.service.gov.uk/document/h-

```

```

"description_values\":{\\"made_up_date\":\\"2019-02-08\\"},\\"action_date\":\\"2019-02-08\\",\\"description\":\\"confirmation-statement-with-updates\\",\\"links\":{\\"self\":\\"/company/06091467/filing-history/MzIzMTQwNDQ2NGFkaXF6a2N4\\",\\"document_metadata\":\\"https://frontend-doc-api.company-information.service.gov.uk/document/4vZtRBHsCIpAlcEPO-exvWc7PkgzE0z09MCSZe_ys0dg\\"},\\"pages\":5,\\"barcode\":\\"X82QZDUG\\"},\\"transaction_id\":\\"MzIzMTQwNDQ2NGFkaXF6a2N4\\"},{\\"description_values\":{\\"termination_date\":\\"2019-03-01\\",\\"officer_name\":\\"Darren Scott Jones\\"},\\"action_date\":\\"2019-03-01\\",\\"description\":\\"termination-director-company-with-name-termination-date\\",\\"date\":\\"2019-04-05\\",\\"category\":\\"officers\\",\\"type\":\\"TM01\\",\\"subcategory\":\\"termination\\",\\"links\":{\\"self\":\\"/company/06091467/filing-history/MzIzMTQwNDExMmFkaXF6a2N4\\",\\"document_metadata\":\\"https://frontend-doc-api.company-information.service.gov.uk/document/anjDryWg_8NY1T8gTtUciHN6DsBquiNlu6kkHx5Ujo4\\"},\\"pages\":1,\\"barcode\":\\"X82QZCMI\\"},\\"transaction_id\":\\"MzIzMTQwNDExMmFkaXF6a2N4\\"},{\\"action_date\":\\"2018-07-01\\",\\"description\":\\"termination-director-company-with-name-termination-date\\",\\"description_values\":{\\"officer_name\":\\"Robert Anthony Burgoyne\\",\\"termination_date\":\\"2018-07-01\\"},\\"category\":\\"officers\\",\\"type\":\\"TM01\\",\\"date\":\\"2019-04-05\\",\\"links\":{\\"self\":\\"/company/06091467/filing-history/MzIzMTQwNDEwMWFkaXF6a2N4\\",\\"document_metadata\":\\"https://frontend-doc-api.company-information.service.gov.uk/document/vf_hKaJrQkzpwDen22wJBgKrxCDDmLy8gLTcJ_SIE94\\"},\\"subcategory\":\\"termination\\",\\"pages\":1,\\"barco

```

```

inks\":{\\"self\\":\\"/company/06091467/filing-
history/MzE2NTAzMTMzM2FkaXF6a2N4\\",\\"document_
metadata\\":\\"https://frontend-doc-api.company-
information.service.gov.uk/document/Dth86zxo4DPP_
JW3IXbNMfVWJOWXMYSSgj7rtEXEbSQ\\"},\\"description\\":\\"account
s-with-accounts-type-total-exemption-
small\\",\\"date\\":\\"2016-12-
21\\",\\"category\\":\\"accounts\\",\\"action_date\\":\\"2016-03-
31\\",\\"pages\\":4,\\"barcode\\":\\"X5MASRXN\\",\\"transaction_
id\\":\\"MzE2NTAzMTMzM2FkaXF6a2N4\\"},
{\\"description\\":\\"annual-return-company-with-made-up-date-
full-list-shareholders\\",\\"category\\":\\"annual-
return\\",\\"date\\":\\"2016-03-
11\\",\\"type\\":\\"AR01\\",\\"Links\\":
{\\"self\\":\\"/company/06091467/filing-
history/MzE0Mzg3MTE4N2FkaXF6a2N4\\",\\"document_
metadata\\":\\"https://frontend-doc-api.company-
information.service.gov.uk/document/uTtxEecKAe_DAB-
XaWvHLSR61LLD68PrzDaYN92A0ts\\"},\\"action_date\\":\\"2016-02-
08\\",\\"description_values\\":{\\"made_up_date\\":\\"2016-02-
08\\"},\\"associated_filings\\":[{\\"action_
date\\":1457654400000,\\"category\\":\\"capital\\",\\"date\\":\\"201
6-03-11\\",\\"description\\":\\"statement-of-
capital\\",\\"description_values\\":{\\"capital\\":
[{\\"currency\\":\\"GBP\\",\\"figure\\":\\"100\\"}],\\"date\\":\\"2016-
03-
11\\"},\\"type\\":\\"SH01\\"}],\\"pages\\":7,\\"barcode\\":\\"X52KAG6R
\\",\\"transaction_id\\":\\"MzE0Mzg3MTE4N2FkaXF6a2N4\\"},
{\\"date\\":\\"2015-12-22\\",\\"action_date\\":\\"2015-03-
31\\",\\"description\\":\\"accounts-with-accounts-type-total-
exemption-small\\",\\"Links\\":
{\\"self\\":\\"/company/06091467/filing-
history/MzEzODExNDYxOGFkaXF6a2N4\\",\\"document_
metadata\\":\\"https://frontend-doc-api.company-
information.service.gov.uk/document/Vj9VNGhqLat7IEEnUIi6DONqz
XcIiNCoxNgryyYieAZs\\"},\\"description_values\\":{\\"made_up_
date\\":\\"2015-03-
31\\"},\\"category\\":\\"accounts\\",\\"type\\":\\"AA\\",\\"pages\\":4,
\\"barcode\\":\\"X4MRYAEP\\",\\"transaction_
id\\":\\"MzEzODExNDYxOGFkaXF6a2N4\\"},{\\"associated_filings\\":
[{\\"action_
date\\":1424131200000,\\"category\\":\\"capital\\",\\"date\\":\\"201
5-02-17\\",\\"description\\":\\"statement-of-

```

```

        "NavigateToPageNo": null
    },
    "Message": null,
    "IsSuccess": true,
    "ClientScript": null,
    "Serialized": null,
    "ErrorCode": 0
}

```

## FTOS\_EXTD\_CMPH\_Insolvency\_Endpoint

This script retrieves information about the company's insolvency status.

Request:

```

{
  "ApiInfo": {
    "Token": "{{access_token}}"
  },
  "Request": {
    "ActionName": "FTOS_EXTD_CMPH_Endpoint",
    "Data": "{ \"query\" : { companyNumber:
  \"06091467\", insolvency:\"true\" } }"
  }
}

```

Response:

```

{
  "UIResult": {
    "NavigateToEntityPage": false,
    "NavigateToEntityPageOnEdit": false,
    "NavigateToEntityFormName": null,
    "NavigateToEntityName": null,
    "NavigateToEntityId": null,
    "NavigateToEntityInsertDefaults": null,
    "NavigateToUrl": null,
    "DownloadFile": null,
    "ReloadPage": false,
    "Message": null,
  }
}

```

```

        "IsSuccess": false,
        "Data": "{\"response\":{\"insolvency\":null}}",
        "NavigateToPageNo": null
    },
    "Message": null,
    "IsSuccess": true,
    "ClientScript": null,
    "Serialized": null,
    "ErrorCode": 0
}

```

## FTOS\_EXTD\_CMPH\_PersonsWithSignificantControl\_Endpoint

This script retrieves information about the company's persons of significant control.

Request:

```

{
  "ApiInfo": {
    "Token": "{{access_token}}"
  },
  "Request": {
    "ActionName": "FTOS_EXTD_CMPH_Endpoint",
    "Data": "{ \"query\" : { companyNumber:
  \"06091467\", personsWithSignificantControl:\"true\" } }"
  }
}

```

Response:

```

{
  "UIResult": {
    "NavigateToEntityPage": false,
    "NavigateToEntityPageOnEdit": false,
    "NavigateToEntityFormName": null,
    "NavigateToEntityName": null,
    "NavigateToEntityId": null,
  }
}

```

```

        "NavigateToEntityInsertDefaults": null,
        "NavigateToUrl": null,
        "DownloadFile": null,
        "ReloadPage": false,
        "Message": null,
        "IsSuccess": false,
        "Data": "{ \"response\":
{ \"personsWithSignificantControl\": { \"errors\":
[ { \"type\": \"ch:service\", \"error\": \"company-psc-not-
found\" } ] } } }",
        "NavigateToPageNo": null
    },
    "Message": null,
    "IsSuccess": true,
    "ClientScript": null,
    "Serialized": null,
    "ErrorCode": 0
}

```

## FTOS\_EXTD\_CMPH\_Exemptions\_Endpoint

This script retrieves information about the audit exemptions.

Request:

```

{
  "ApiInfo": {
    "Token": "{{access_token}}"
  },
  "Request": {
    "ActionName": "FTOS_EXTD_CMPH_Endpoint",
    "Data": "{ \"query\" : { companyNumber:
\"06091467\", exemptions: \"true\" } }"
  }
}

```

Response:

```

{
  "UIResult": {
    "NavigateToEntityPage": false,

```

```

    "NavigateToEntityPageOnEdit": false,
    "NavigateToEntityFormName": null,
    "NavigateToEntityName": null,
    "NavigateToEntityId": null,
    "NavigateToEntityInsertDefaults": null,
    "NavigateToUrl": null,
    "DownloadFile": null,
    "ReloadPage": false,
    "Message": null,
    "IsSuccess": false,
    "Data": "{ \"response\": { \"exemptions\": { \"errors\":
[ { \"error\": \"company-exemptions-not-
found\", \"type\": \"ch:service\" } ] } } }",
    "NavigateToPageNo": null
  },
  "Message": null,
  "IsSuccess": true,
  "ClientScript": null,
  "Serialized": null,
  "ErrorCode": 0
}

```

## FTOS\_EXTD\_CMPH PersonsWithSignificantControlStatements\_Endpoint

This script retrieves information about the company's persons of significant control statements.

Request:

```

{
    "ApiInfo": {
        "Token": "{{access_token}}"
    },
    "Request": {
        "ActionName": "FTOS_EXTD_CMPH_
Endpoint",
        "Data": "{ \"query\" :
{  companyNumber: \"06091467\" ,
personsWithSignificantControlStatements: \"true\" }  }"
    }
}

```

Response:

```

{
    "UIResult": {
        "NavigateToEntityPage": false,
        "NavigateToEntityPageOnEdit": false,
        "NavigateToEntityFormName": null,
        "NavigateToEntityName": null,
        "NavigateToEntityId": null,
        "NavigateToEntityInsertDefaults":
null,
        "NavigateToUrl": null,
        "DownloadFile": null,
        "ReloadPage": false,
        "Message": null,
        "IsSuccess": false,
        "Data": "{ \"response\":
{ \"personsWithSignificantControlStatements\": { \"total_
results\": 1, \"items\": [ { \"notified_on\": \"2017-02-
08
\
\", \"
etag\
\": \"
320
c3916f9e98473f719da6fa2d8ca7cfd0362d\", \"kind\": \"persons-
with-significant-control-statement\", \"links\":
{ \"self\": \"/company/06091467/persons-with-significant-
control-
statements/GZQP0MpQ611BET9yOtf3yh1VRrM\
\", \"statement\": \"no-individual-or-entity-with-significant-
control\" } ], \"ceased_count\": 0, \"links\":
{ \"self\": \"/company/06091467/persons-with-significant-
control-statements\", \"active_count\": 1, \"items_per_
page\": 25, \"start_index\": 0 } } }\",
        "NavigateToPageNo": null
    },
    "Message": null,
    "IsSuccess": true,
    "ClientScript": null,
    "Serialized": null,
    "ErrorCode": 0
}

```



## FTOS\_EXTD\_CMPH\_CompanyUK\_Establishments\_Endpoint

This script retrieves information about the company's UK establishments.

Request:

```
{
  "ApiInfo": {
    "Token": "{{access_token}}"
  },
  "Request": {
    "ActionName": "FTOS_EXTD_CMPH_Endpoint",
    "Data": "{ \"query\" : {   companyNumber:
  \"06091467\" , ukEstablishments:\"true\" }   }"
  }
}
```

Response:

```
{
  "UIResult": {
    "NavigateToEntityPage": false,
    "NavigateToEntityPageOnEdit": false,
    "NavigateToEntityFormName": null,
    "NavigateToEntityName": null,
    "NavigateToEntityId": null,
    "NavigateToEntityInsertDefaults": null,
    "NavigateToUrl": null,
    "DownloadFile": null,
    "ReloadPage": false,
    "Message": null,
    "IsSuccess": false,
    "Data": "{ \"response\" : { \"ukEstablishments\" :
  { \"kind\" : \"related-companies\" , \"links\" :
  { \"self\" : \"/company/06091467\" } , \"items\" :
  [ ] , \"
  etag\" : \"4b9be5ec8da5fa92ba9b875d388ea1e0f83bb6de\" } } }",
    "NavigateToPageNo": null
  },
  "Message": null,
  "IsSuccess": true,
  "ClientScript": null,
}
```

```

    "Serialized": null,
    "ErrorCode": 0
  }

```

## FTOS\_EXTD\_CMPH\_DisqualifiedOfficerSearch\_NaturalDisqualified\_Endpoint

This script retrieves information about natural (persons) disqualification.

Request:

```

{
  "ApiInfo": {
    "Token": "{{access_token}}"
  },
  "Request": {
    "ActionName": "FTOS_EXTD_CMPH_DisqualifiedOfficerSearch_Endpoint",
    "Data": "{ query : \"John\"}"
  }
}

```

Response:

```

{
  "UIResult": {
    "NavigateToEntityPage": false,
    "NavigateToEntityPageOnEdit": false,
    "NavigateToEntityFormName": null,
    "NavigateToEntityName": null,
    "NavigateToEntityId": null,
    "NavigateToEntityInsertDefaults": null,
    "NavigateToUrl": null,
    "DownloadFile": null,
    "ReloadPage": false,
    "Message": null,
    "IsSuccess": false,
  }
}

```

```

        "Data": "{\n"status\":true,\n"response\":
{\n"kind\":\n"search#disqualified-officers\",\n"items\":
[{\n"snippet\":\n\",\n"kind\":\n"searchresults#disqualified-
officer\",\n"links\":{\n"self\":\n"/disqualified-
officers/natural/
9lfTmX7Rig5wK2kgzPvtdjPNQ5E\"},\n"description_identifiers\":
[\n"born-on\"],\n"address\":{\n"postal_code\":\n"CF64
3RR\",\n"address_line_1\":\n"Clos Yr
Erw\
\",\n
locality\
\":\n"Penarth\",\n"premises\":\n"10\",\n"country\":\n"United
Kingdom\"},\n"title\":\n"Ceri Jason JOHN\",\n"date_of_
birth\":\n"1971-06-29T00:00:00Z\",\n"description\":\n"Born on
29 June 1971 - Disqualified\",\n"matches\":{\n"title\":
3RR\"},
\", \n"description\":\n"Born on 13 February 1980 -
address_snippet\":\n"44 Stone Hall Road, London,
\", \n"address\":{\n"postal_code\":\n"N21
\", \n"locality\":\n"London\"}, \n"links\":
\", \n"title\":\n"Dominic JOHN\",\n"date_
\", \n"date_of_birth\":\n"1963-12-
\", \n"links\":{\n"self\":\n"/disqualified-
postal_code\":\n"SA6 7EU\",\n"address_line_
\":\n"Heol Cefni\",\n"premises\":\n"25\",\n"country\":\n"United
7EU\",\n"description\":\n"Born on
title\":[7,10]},\n"kind\":\n"searchresults#disqualified-
snippet\":\n\",\n"kind\":\n"searchresults#disqualified-
5DD\",\n"locality\":\n"Barry\",\n"address_line_1\":\n"Pioden
\", \n"premises\":\n"4\"}, \n"description_identifiers\":
-4xpWBXeo\"}, \n"date_of_
\", \n"matches\":{\n"snippet\":[], \n"title\":
\", \n"address_snippet\":\n"4 Pioden For, Barry,
kind\":\n"searchresults#disqualified-
\":\n"1974-05-30T00:00:00Z\",\n"links\":

```

```
self\":"\/disqualified-officers/natural/_
SwLrhWMFwjqoXQHmJ0xoCsq4I4\"},\"title\":"Andrew John
AUSTIN\", \"date_of_birth\":"1967-03-
01T00:00:00Z\", \"description\":"Born on 1 March 1967 -
Disqualified\", \"matches\":{\"snippet\":[], \"title\":"
[8,11]}, \"address_snippet\":"Limekilns, The Street,
Plaxtol, Sevenoaks, United Kingdom, TN15
0
QL\", \"snippet\":"\", \"kind\":"searchresults#disqualified-
officer\"}], \"start_index\":"0, \"total_results\":"470, \"page_
number\":"1, \"items_per_page\":"20}, \"items\":"
[\"snippet\":"\", \"kind\":"searchresults#disqualified-
officer\", \"links\":{\"self\":"\/disqualified-
officers/natural/
    born-on\"}], \"address\":{\"postal_code\":"CF64
\", \"
\":"Penarth\", \"premises\":"10\", \"country\":"United
\":"1971-06-29T00:00:00\", \"description\":"Born on 29
    snippet\":[], \"address_snippet\":"10 Clos Yr
    snippet\":"\", \"kind\":"searchresults#disqualified-
\", \"matches\":{\"snippet\":[], \"title\":"
    1LP\", \"description_identifiers\":[\"born-
1LP\", \"premises\":"44\", \"address_line_1\":"Stone Hall
    self\":"\/disqualified-officers/natural/Xnyu-
\":"1980-02-13T00:00:00\"}, {\"title\":"Karen
T00:00:00\", \"description_identifiers\":[\"born-
    \"}], \"address\":"
\":"Morriston\", \"locality\":"Swansea\", \"address_line_
    \"}, \"address_snippet\":"25 Heol Cefni, Morriston,
25 December 1963 - Disqualified\", \"matches\":{\"snippet\":"
    kind\":"searchresults#disqualified-
```

```

title\":[6.0,9.0]],\address_snippet\":"Flat 17 Lake Point
Marine Drive, Lytham St. Annes, Lancashire, FY8 1BT\"},
{\description_identifiers\":[\born-on\"],\address\":
{\address_line_2\":"Plaxtol\", \postal_code\":"TN15
0QL\", \premises\":"Limekilns\", \country\":"United
Kingdom\", \locality\":"Sevenoaks\", \address_line_
1\":"The Street\"}, \links\":{\self\":" /disqualified-
officers/natural/_
SwLrhWMFwjqoXQHmJ0xoCsq4I4\"}, \title\":"Andrew John
AUSTIN\", \date_of_birth\":"1967-03-
01T00:00:00\", \description\":"Born on 1 March 1967 -
Disqualified\", \matches\":{\snippet\":[], \title\":
[8.0,11.0]], \address_snippet\":"Limekilns, The Street,
Plaxtol, Sevenoaks, United Kingdom, TN15
0QL\", \snippet\":"\", \kind\":"officer\":
[6.0,9.0]], \address_snippet\":"Flat 17 Lake Point Marine
Drive, Lytham St. Annes, Lancashire, FY8 1BT\"},
{\description_identifiers\":[\born-on\"], \address\":
{\address_line_2\":"Plaxtol\", \postal_code\":"TN15
0QL\", \premises\":"Limekilns\", \country\":"United
Kingdom\", \locality\":"Sevenoaks\", \address_line_
1\":"The Street\"}, \links\":{\self\":" /disqualified-
officers/natural/_
SwLrhWMFwjqoXQHmJ0xoCsq4I4\"}, \title\":"Andrew John
AUSTIN\", \date_of_birth\":"1967-03-
01T00:00:00\", \description\":"Born on 1 March 1967 -
Disqualified\", \matches\":{\snippet\":[], \title\":
[8.0,11.0]], \address_snippet\":"Limekilns, The Street,
Plaxtol, Sevenoaks, United Kingdom, TN15
0
QL\", \snippet\":"\", \kind\":"searchresults#disqualified-
officer\"]]}",
  "NavigateToPageNo": null
},
  "Message": null,
  "IsSuccess": true,
  "ClientScript": null,
  "Serialized": null,
  "ErrorCode": 0
}

```

## FTOS\_EXTD\_CMPH\_OfficersSearch\_Endpoint

This script retrieves information about officers.

## Request:

```

{
  "ApiInfo": {
    "Token": "{{access_token}}"
  },
  "Request": {
    "ActionName": "FTOS_EXTD_CMPH_OfficersSearch_
Endpoint",
    "Data": "{ \"query\" : {  searchLocation:
\"London\" , searchTerm:\"John\" }  }"
  }
}

```

## Response:

```

{
  "UIResult": {
    "NavigateToEntityPage": false,
    "NavigateToEntityPageOnEdit": false,
    "NavigateToEntityFormName": null,
    "NavigateToEntityName": null,
    "NavigateToEntityId": null,
    "NavigateToEntityInsertDefaults": null,
    "NavigateToUrl": null,
    "DownloadFile": null,
    "ReloadPage": false,
    "Message": null,
    "IsSuccess": false,
  }
}

```

```

        "Data": "{\\"kind\\":\\"search#officers\\",\\"items_per_
page\\":20,\\"items\\":[{\\"description\\":\\"Total number of
appointments 4 - Born April 1965\\",\\"title\\":\\"John Andrew
LONDON\\
",\\"
kind\\":\\"searchresults#officer\\",\\"snippet\\":\\"\\",\\"address_
snippet\\":\\"Wyvols Court, Basingstoke Road, Swallowfield,
Reading, Berkshire, England, RG7 1WY\\",\\"address\\":
{\\"address_line_2\\":\\"Swallowfield\\",\\"premises\\":\\"Wyvols
Court\\",\\"postal_code\\":\\"RG7
1
WY\\
",\\"
region\\":\\"Berkshire\\",\\"locality\\":\\"Reading\\",\\"address_
line_1\\":\\"Basingstoke
Road\\",\\"country\\":\\"England\\"},\\"matches\\":{\\"snippet\\":
[1,4,13,18]},\\"appointment_
count\\":4,\\"description_identifiers\\":[\\"appointment-
count\\",\\"born-on\\"],\\"date_of_birth\\":
{\\"month\\":4,\\"year\\":1965},\\"links\\":
{\\"self\\":\\"/officers/C6F_Zbfei2e7k5DFgYhq_
UNYj7I/appointments\\"}},
{\\"
snippet\\
":\\"
",\\"kind\\":\\"searchresults#officer\\",\\"description\\":\\"Total
",\\"matches\\":{\\"title\\":[1,4,12,17],\\"snippet\\":
appointment-count\\"],\\"address_snippet\\":\\"90 Britten
address_line_1\\":\\"Britten Close\\",\\"country\\":\\"United
7HW\\",\\"premises\\":\\"90\\"},\\"links\\":
"},{\\"date_of_birth\\":

self\\
/officers/tWq8QQugQZk29uH1L0zfIgn8FhU/appointments\\
of appointments 3 - Born October
\\
kind\\
postal_code\\":\\"DH3 2QJ\\"},\\"address_line_1\\":\\"Durham
",\\"country\\":\\"England\\",\\"address_line_
":\\"58 Durham Road, Birtley, Chester Le Street,
appointment-count\\",\\"born-on\\"],\\"appointment_
title\\":\\"John William

```

```
Total number of appointments 4 - Born March
1940\", \"title\": \"John Vincent LONDON\", \"matches\":
{ \"title\": [1,4,14,19], \"snippet\": [], \"description_
identifiers\": [\"appointment-count\", \"born-
on\"], \"appointment_count\": 4, \"address\": { \"address_line_
1\": \"228 Mulgrave
Road\
\", \"locality\": \"Sutton\", \"country\": \"England\", \"postal_
code\": \"SM2 6JT\", \"premises\": \"Hayles Bridge
Offices\", \"address_line_2\": \"Cheam\"}, \"address_
snippet\": \"Hayles Bridge Offices, 228 Mulgrave Road, Cheam,
Sutton, England, SM2 6JT\"}, { \"links\":
{ \"
self\
\": \"
/officers/smF38fgEPNy2IJHJIBLYCzn00bo/appointments\
\"}, \"date_of_birth\":
{ \"
year\
\": 1945, \"
month\
\": 8}, \"
kind\
\": \"
searchresults#officer\
```

```
2 - Born August 1945\", \"title\": \"John Walter
description_identifiers\": [\"appointment-
\": \"4 Maypole Close, Saffron Walden, Essex, CB11
\", \"region\": \"Essex\", \"locality\": \"Saffron

self\

/officers/Sv6M0rSjqM9cw8LWoPV7gI9HY6U/appointments\

\": 11, \"
\": 1934}, \"
\": \"\", \"kind\": \"searchresults#officer\", \"title\": \"John
4 - Born November 1934\", \"appointment_
```

```
\", \"born-on\"], \"matches\": { \"title\":
```

```
premises\": \"Sevenoaks Town Council Offices\", \"postal_
```



```

",\"locality\": \"London\", \"address_line_1\": \"170a High
Street
North\
\"}, \"
kind\
\": \"
searchresults#officer\
\", \"snippet\": \"\", \"title\": \"EUROCHEM LONDON
LTD\", \"description\": \"Total number of appointments
0\", \"links\": {\"self\": \"/officers/06IcMqhg9v3a2bVvf1I6_
NtC0o8/appointments\"}}, \"start_
index\": 0, \"results\locality\": \"London\", \"address_line_
1\": \"170a High Street
North\
\"}, \"
kind\
\": \"
searchresults#officer\
\", \"snippet\": \"\", \"title\": \"EUROCHEM LONDON
LTD\", \"description\": \"Total number of appointments
0\", \"links\": {\"self\": \"/officers/06IcMqhg9v3a2bVvf1I6_
NtC0o8/appointments\"}}, \"start_index\": 0, \"total_
results\": 314069, \"page_number\": 1\",
  \"NavigateToPageNo\": null
},
  \"Message\": null,
  \"IsSuccess\": true,
  \"ClientScript\": null,
  \"Serialized\": null,
  \"ErrorCode\": 0
}

```

## ETOS\_EXTD\_CMPH\_OfficersAppointments\_Endpoint

Information will be provided.